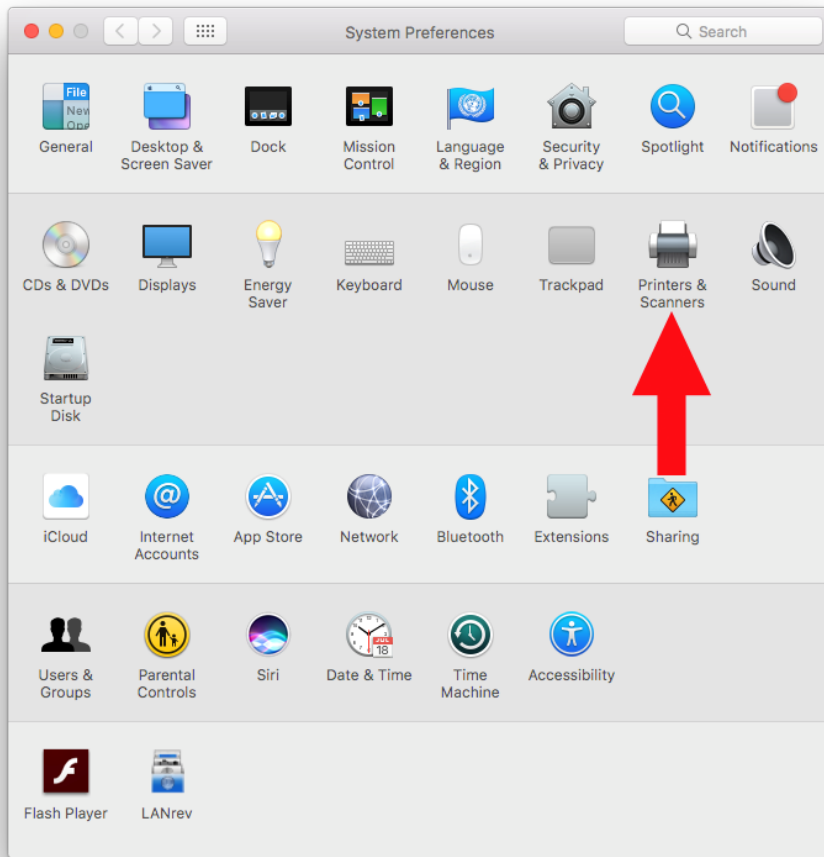
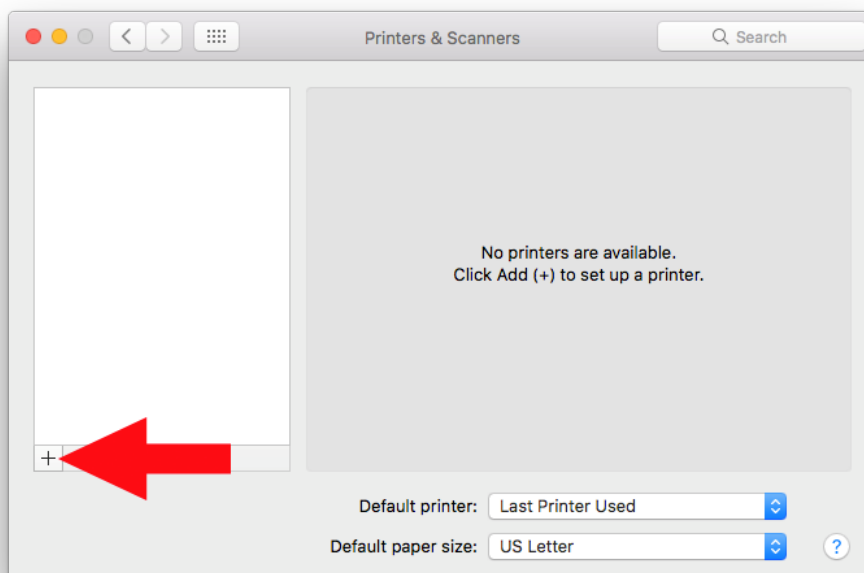


# ZipPrint Setup on a Personal Device (MAC)

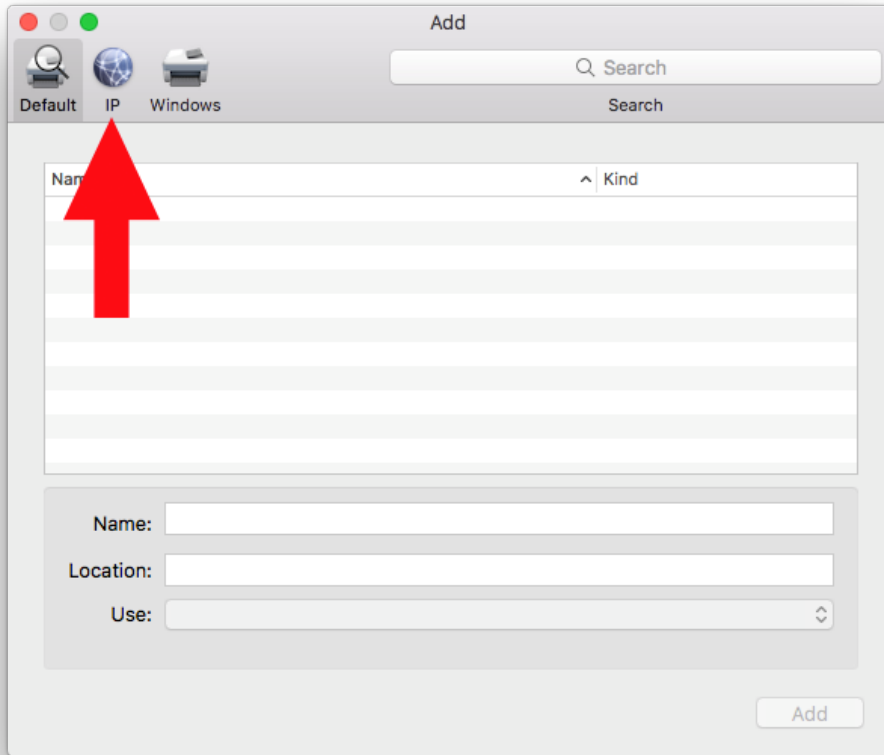
1. Go to **System Preferences** and click on **Printers & Scanners**



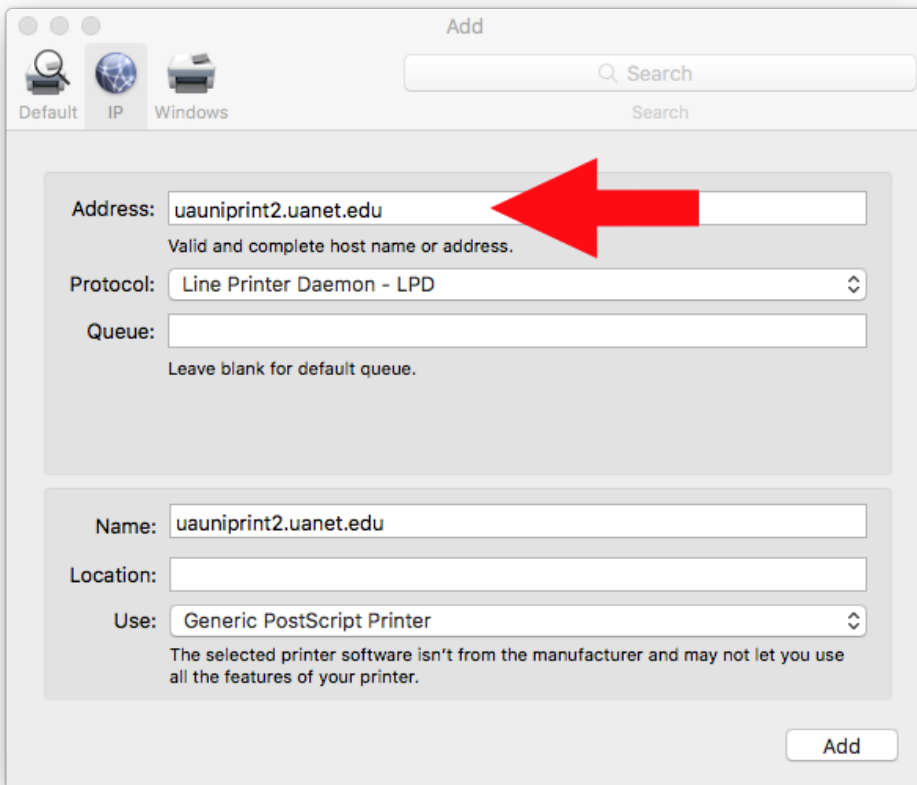
2. Click the plus symbol to add a new printer



3. On the **Add** screen, click the **IP** tab



4. In the **Address** field, type **"uauniprint2.uanet.edu"** without the quotes



5. Verify that **“Line Printer Daemon – LPD”** is selected as the **Protocol**

6. In the **Queue** field, type the name of the printer queue that corresponds to the printer that you want to add.

<b>Printer Location</b>	<b>Printer Queue Name</b>
Lower A Hallway	PPHP4515nWayneCollA120
A-224	PPHP4515nWayneCollA224
B-120	PPHP4515nWayneCollB-120
C-111	PPHP4515NWayneCollC-111
C-221	PPHP4515nWayneCollC-221
D-107 (Lower D Area)	PPHP4515nWayneCollD-107
Learning Center	PPHP4515nWayneCollB-107
Library (B&W)	PPHPCP4525dnWCLib-B&W
Library (Color)	PPHPCP4525dnWCLib-Color
SLB-204	PPHP4515nWayneCollSLB204
SLB Kiosk	PPHP4515nWayneCollSLBKiosk

7. By default, it will name the printer **“uauniprint2.uanet.edu”**. It is recommended that you change the name to something more descriptive especially if you plan to add multiple printers.

8. **Location** is optional

9. Click **Add**

10. Click **OK** and then you should see the printer in your list of printers.

**IMPORTANT:** After the document has been sent to the print queue, when you swipe your card it will not show your UANET ID. It will show the hostname of the machine. To find your hostname click Finder and it will be the name next to the house icon.